



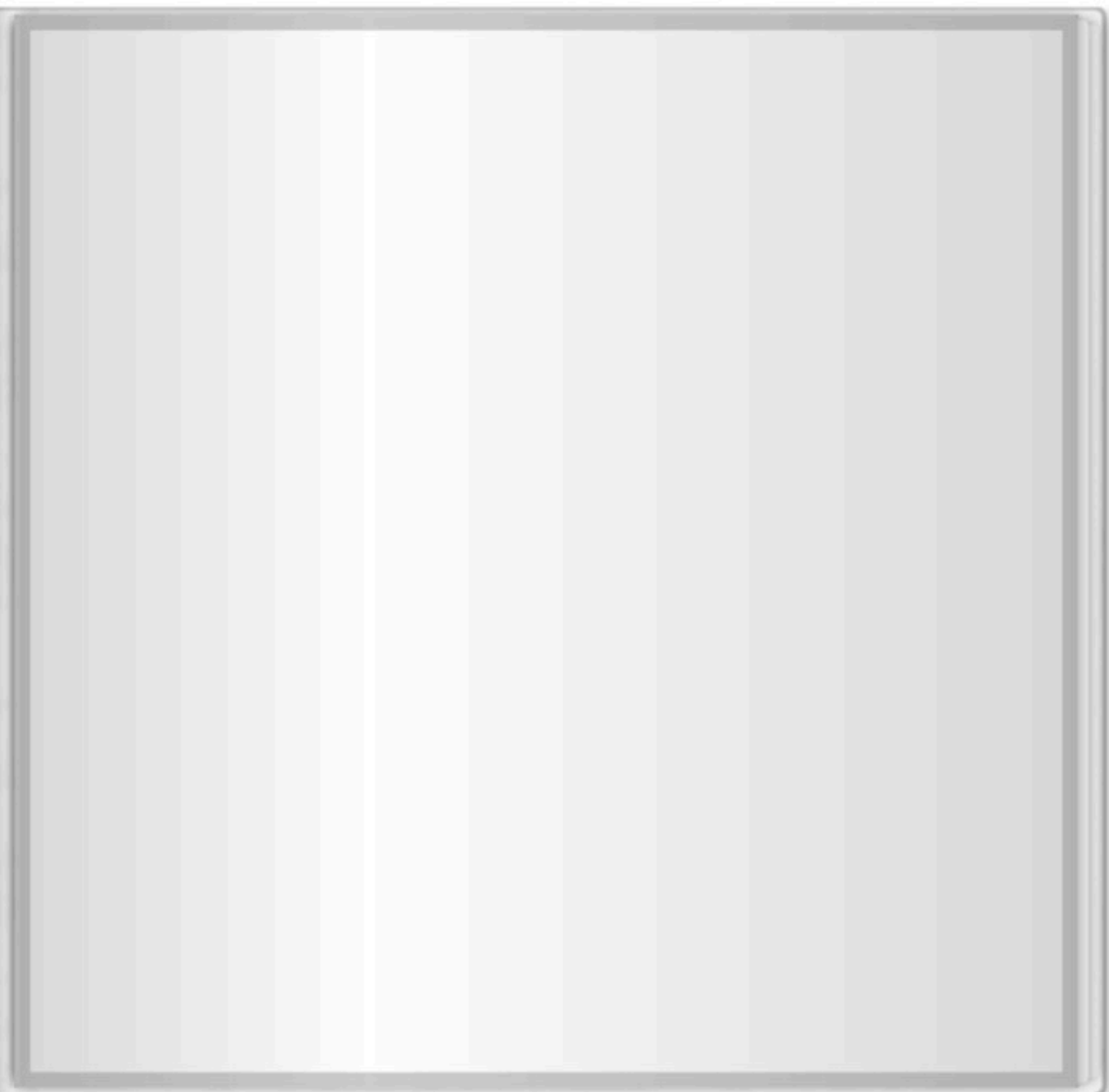
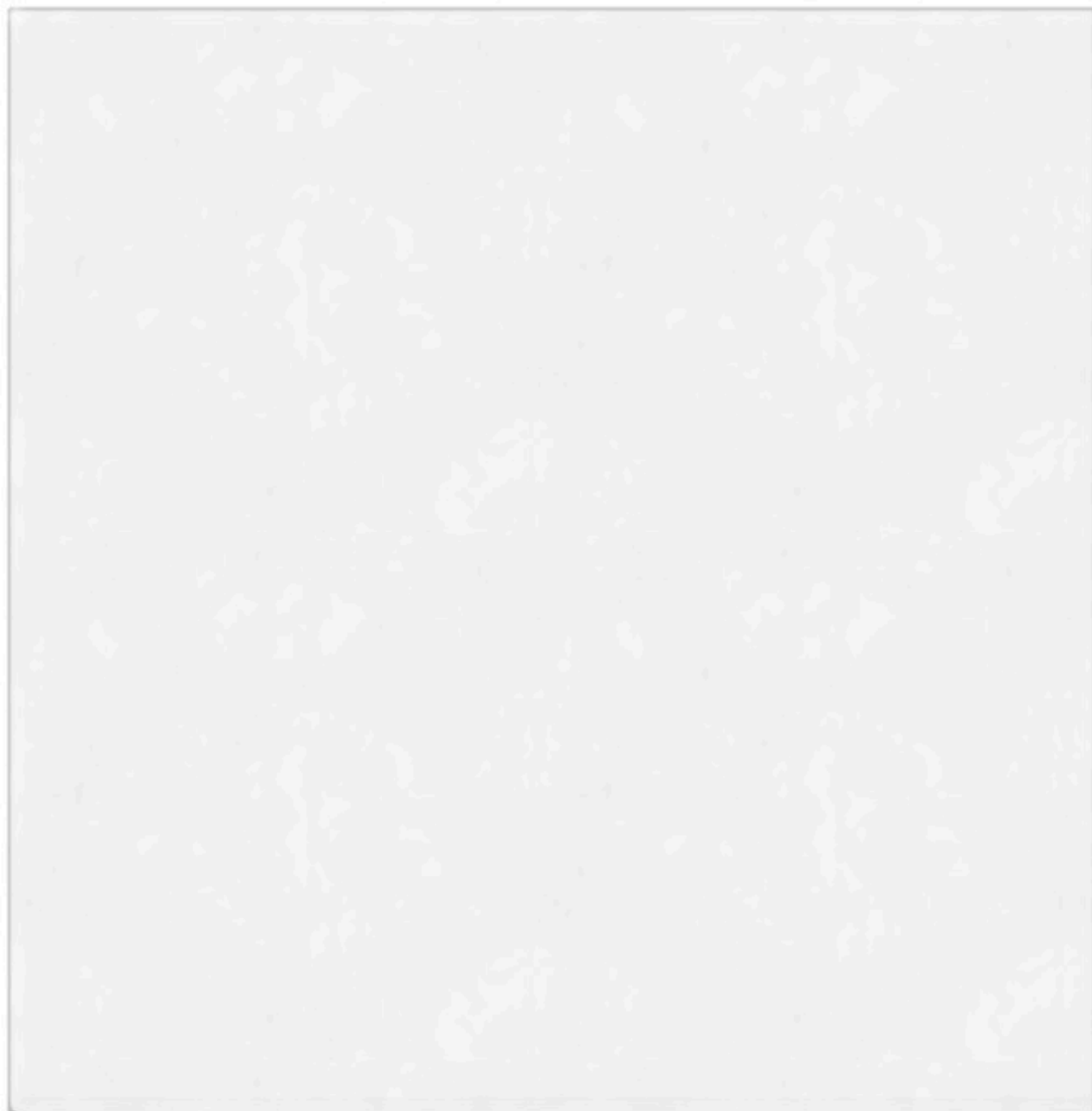
EASTON RIDGE NATIONAL PARK

Spring and Summer in EASTON RIDGE NATIONAL PARK

Institute of Inter-witted Research

Photographs by
Georgina Rose and Dave Warren

HAPPY FOTO Ein Qualitätsprodukt
von HappyFoto
www.happyfoto.at/fotobuch



Spring and Summer in Easton Ridge National Park

Published by Claudia Antonius and Jörg Jozwiak (*Institute of Inter-witted Research*), Vienna 2018

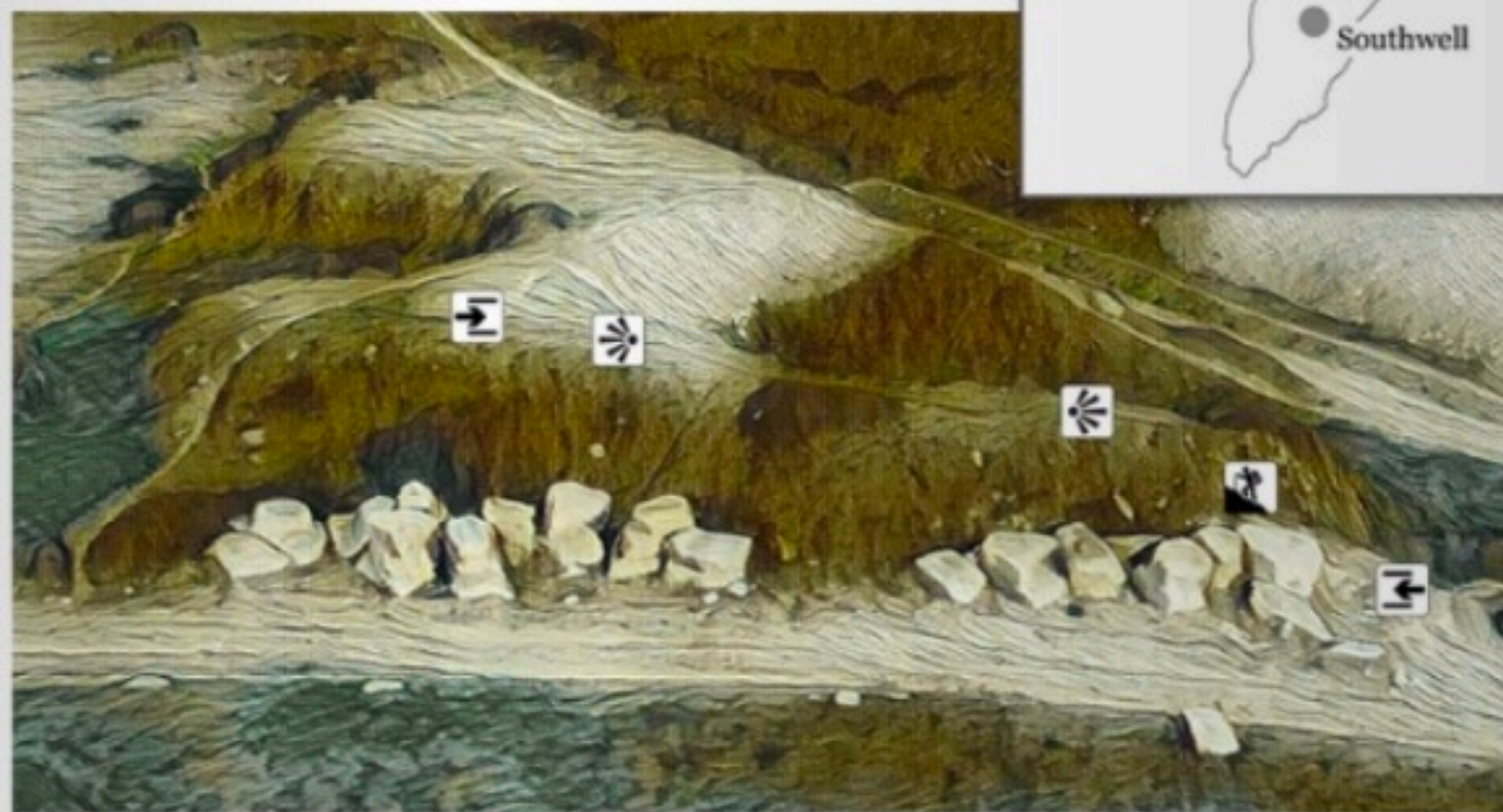
Commissioned by *b-side multimedia arts festival*, Portland (UK), September 8th to 16th 2018

Edition: 25

Copyright: Claudia Antonius and Jörg Jozwiak

The photographers Georgina Rose and Dave Warren share the copyright of individual images in this publication. No image may be reproduced, stored in a retrieval system, or transmitted, in any form or by any means without the prior permission of the photographer. However, you are likely to get this permission – just drop us a line: studio@intersinn.art

The proceeds of this publication are donated to the *Dorset Wildlife Trust*.



Preface

Easton Ridge National Park - a project by the *Institute of Inter-witted Research*

National parks offer something that is essential to human beings. Whether this takes the form of recreation, experiences of 'the unspoilt', or just the need to be outdoors – people visit national parks for that gratification.

As pollution and the burdens of urban living are increasing, so is the desire to be out in nature. Nature touches us and the more of it that gets destroyed the more we sense the need to conserve it: As we snorkel over a coral reef, watch a glacier calving, or take in the impressions on a safari. We feel *alive* as we do so ... often after having travelled thousands of miles by air and perhaps thinking that, *alas!* there is no way of getting to these natural treasures without adding to their destruction.

At the same time, we have all heard the truism that "*so much is to be discovered on our doorstep*". Ecologists and poets say so. But what does it take to *actually* make us turn to our own beautiful shores and countryside – let alone vacant lots, field edges, or, for that matter, a spoil heap between two quarries?

Art is made to draw attention to aspects of life that otherwise escape us and to facilitate experiences. The value of art, like that of a National Park is its ability to impact those who appreciate it and change how they look at the world. '*National Park*' is a distinction for a piece of land just as '*Art*' is a distinction for an object or event. Both suggest: Look, think, feel!

This book is designed to serve as an introduction to the flora, fauna, and landscape along a forty-metre long piece of trail that traverses a quarry dump in the centre of the Isle of Portland. It is intended to familiarise visitors with what they can encounter whilst walking the 'crest' of this 'range' that, on the occasion of the 2018 *b-side multimedia arts festival* has been designated the *Easton Ridge National Park*. Whilst this book covers only a couple of square metres, the park may not. Its entrance and exit are clearly marked by the side of the trail but how far does it extend to the left and to the right? This question is left to be contemplated by the visitor.

In case the reader may feel slightly amused regarding one or the other choice of an illustration – this is not unwarranted. The *Institute of Inter-witted Research* explores notions of the serious within the humorous, and the humour to be found within the serious and *Easton Ridge National Park* (as one of its projects) is no exception.

Vienna, August 2018





Looking along the range on a gloomy day in March facing East (left) and West (right).

previous pages: Easton Ridge National Park from the distance.



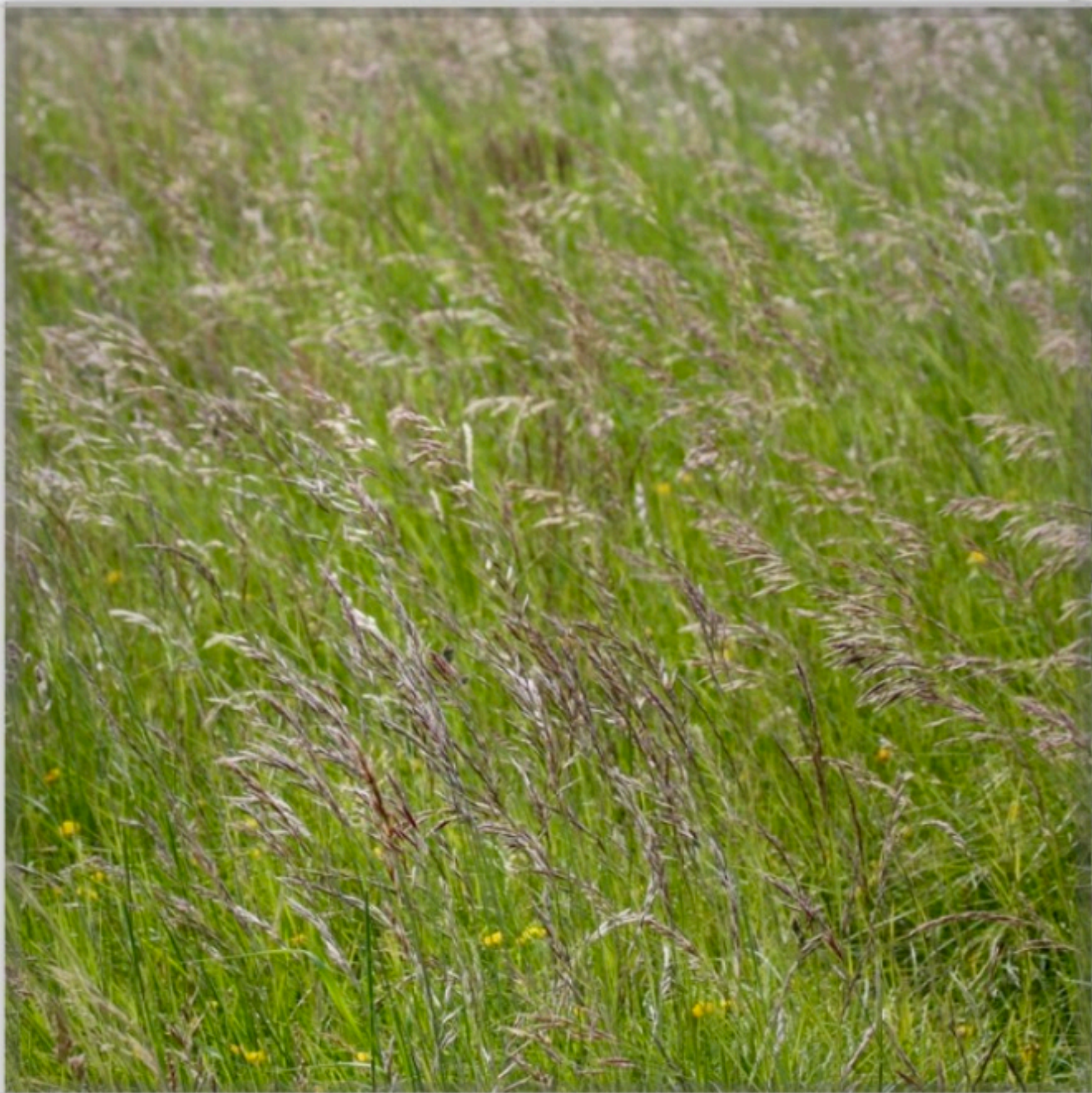
Steep hiking trail
to the crest of
Easton Ridge.

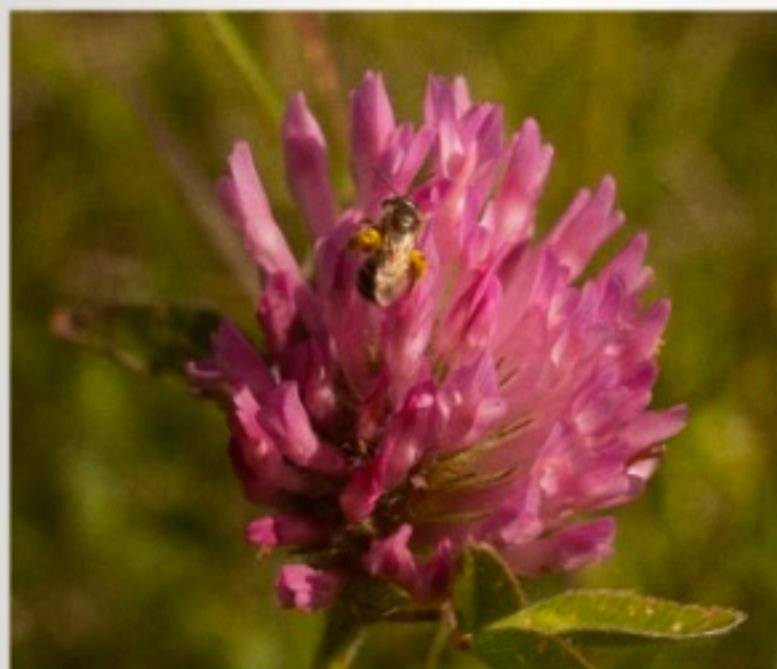
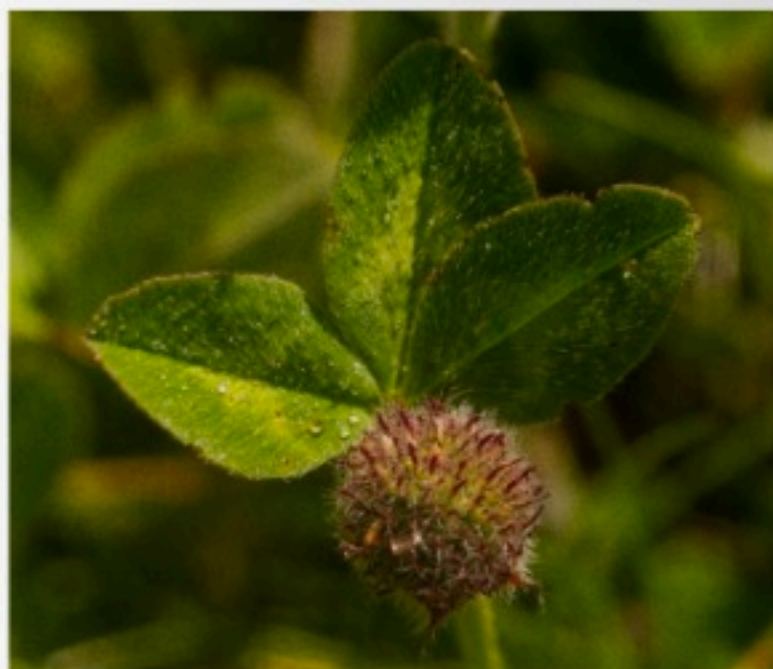
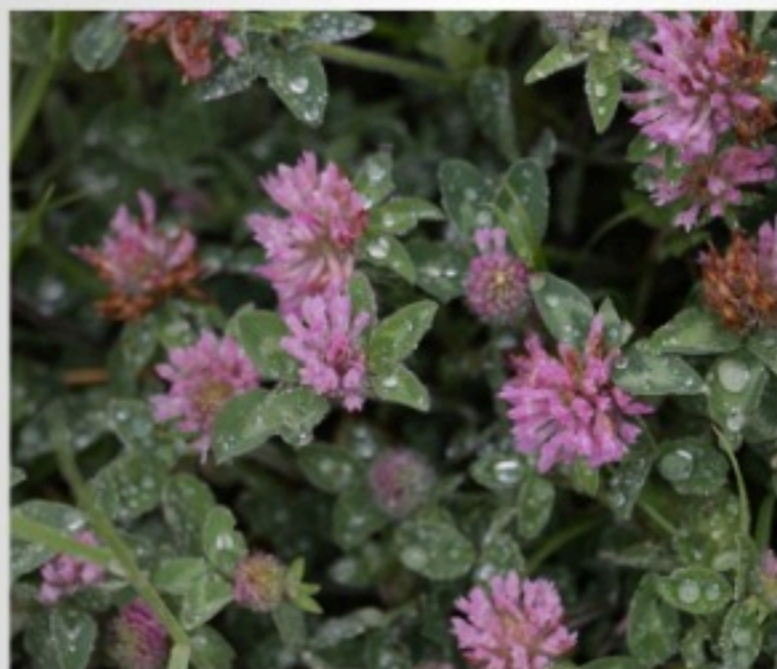
> Grassy slopes
in spring.





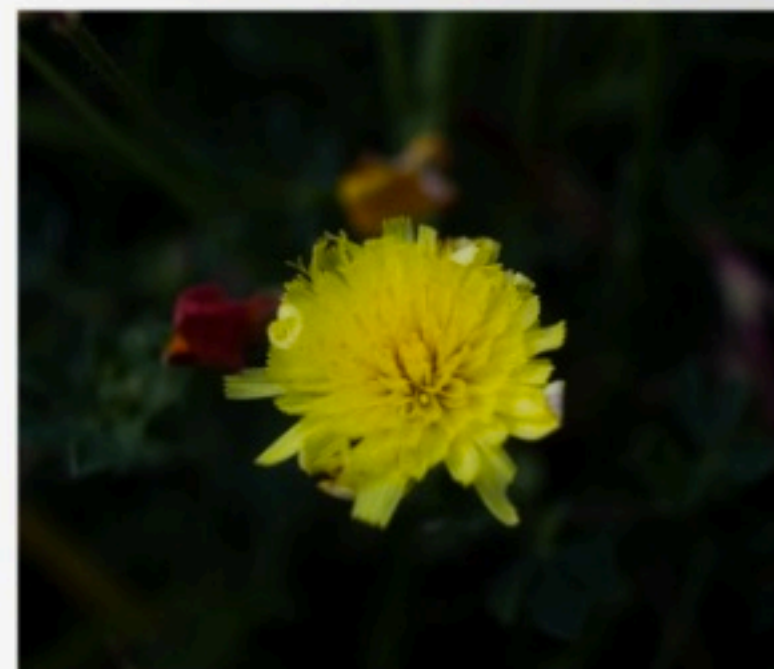
top: Typical vegetation
 bottom: The north face of Easton Ridge and main walking trail leading up to the park.
 < top: Boulders at the southern foot of the range.
 bottom left and right: The lush green of the northern slopes in spring.





previous pages: grass spikes and stalks

top left and right: different species of clover
bottom left: clover and bee | bottom right: Common Knapweed



top left: well camouflaged grasshopper | top right: Horseshoe Vetch
bottom left: wild mustard | bottom right: hawkbit



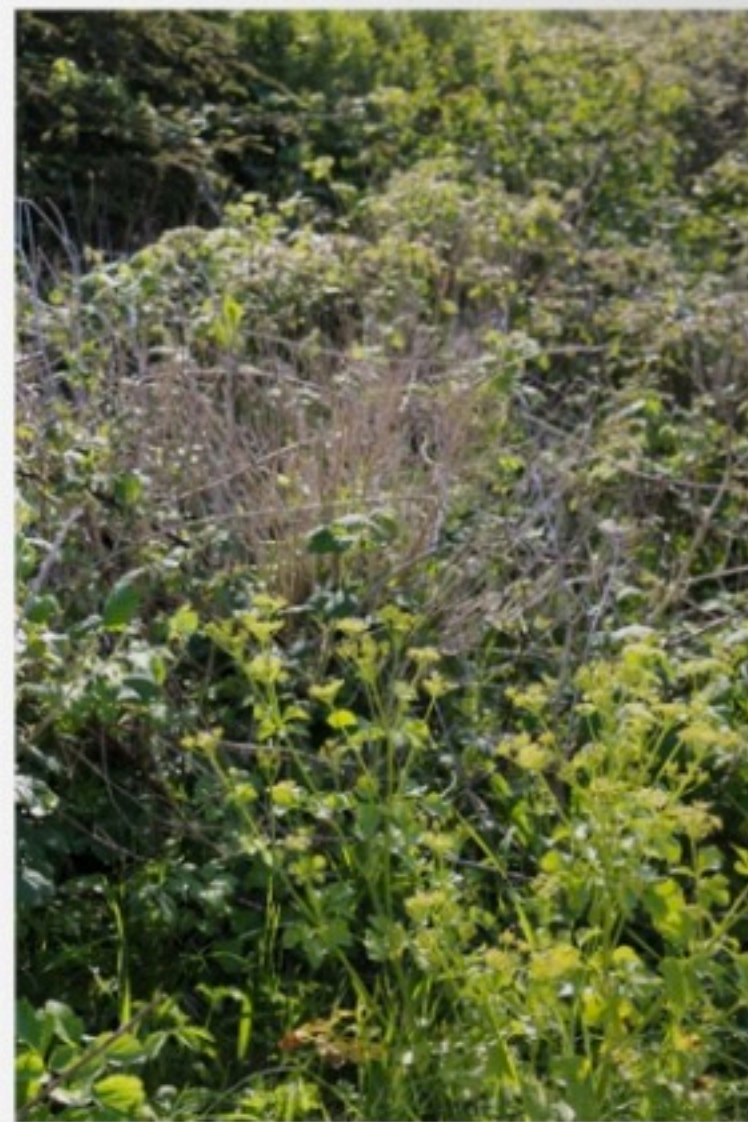
Goldrush in spring



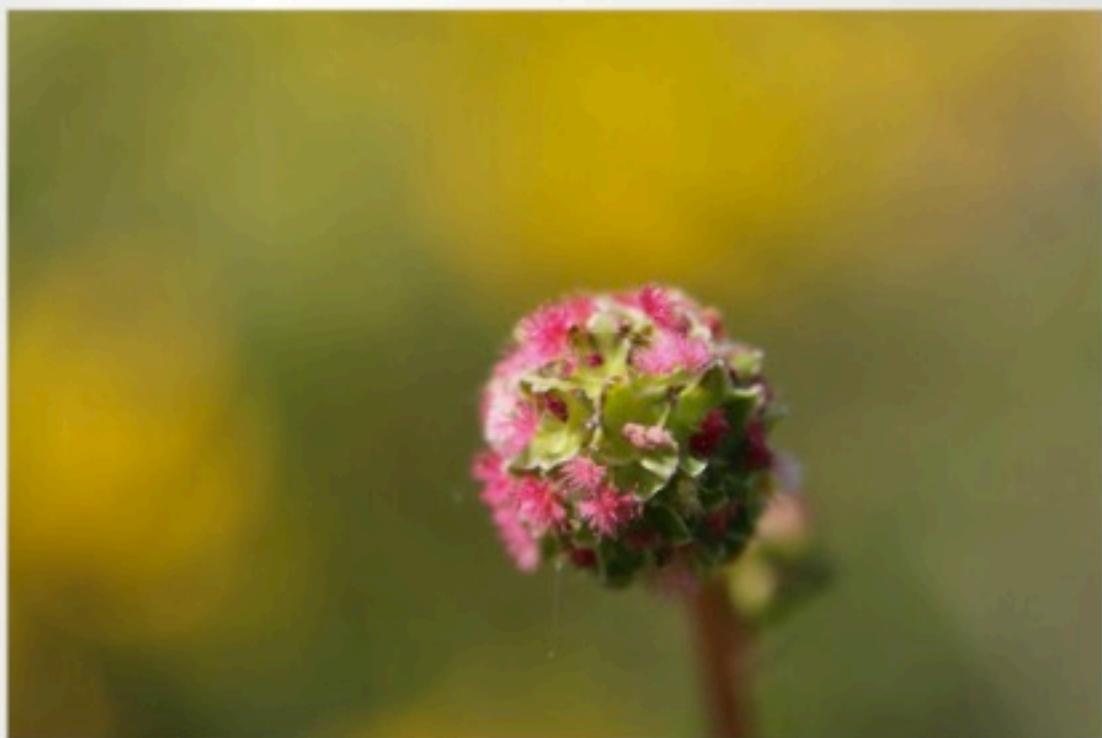
The "blue hour"



Grasses: The most wide-spread plant species on the range.



Parts of Easton Ridge are covered by an almost unpenetrable thicket for most of the year.

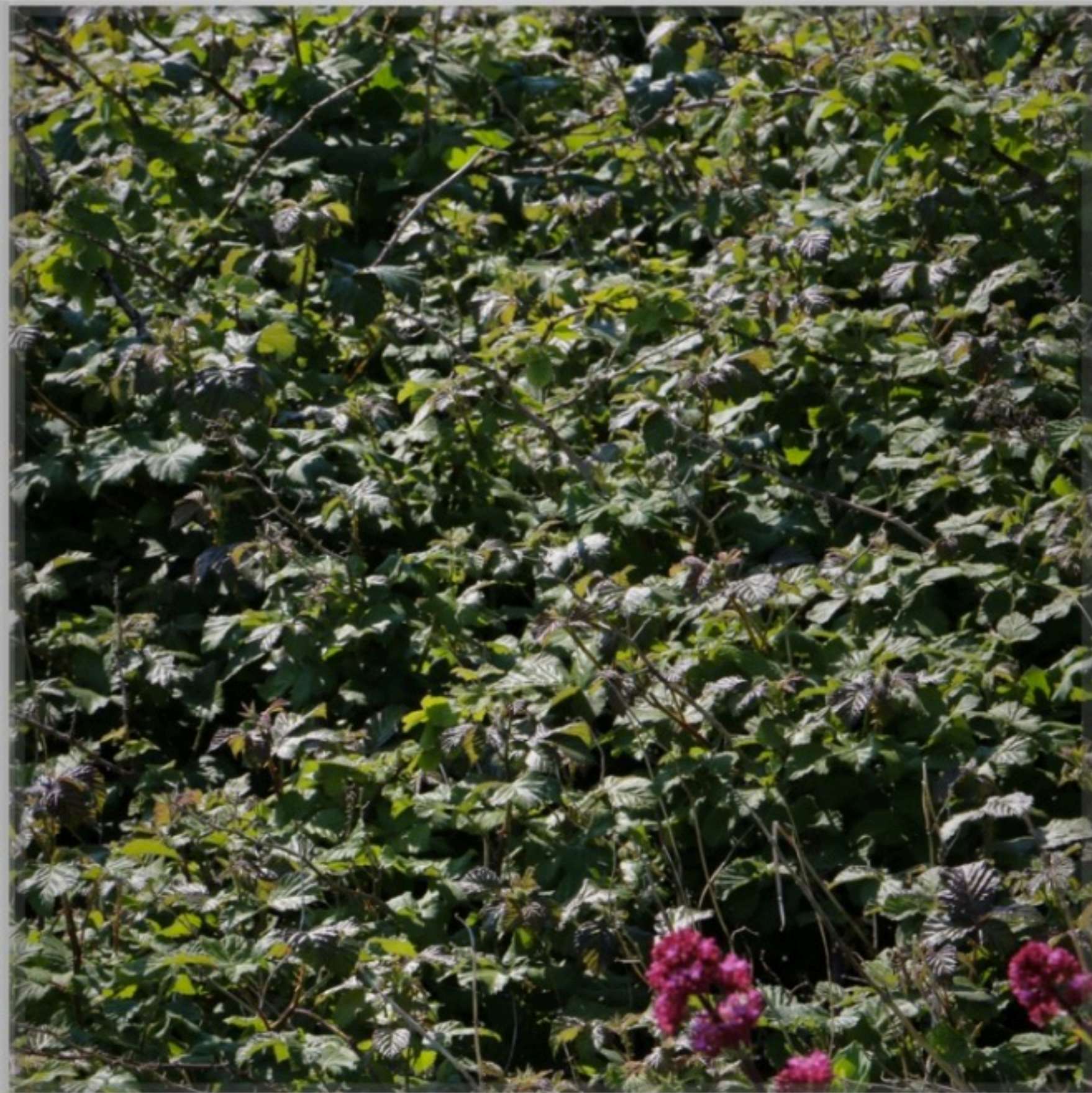


left: Soon to bloom... | right: One of the many grasses in the park.
 < top and bottom: Salad burnet



top: clematis
bottom: thistle

> bramble





top and bottom:
wild carrot



Portland Stone (a limestone from the Tithonian stage of the Jurassic period) is the geological base of Easton Ridge. Exposure to wind and weather produces remarkable structures on its surface.





top: common daisies
bottom: Oxeye Daisies

> Rainy day

previous pages:
The effect of wind and
rain on Easton Ridge
grasses.



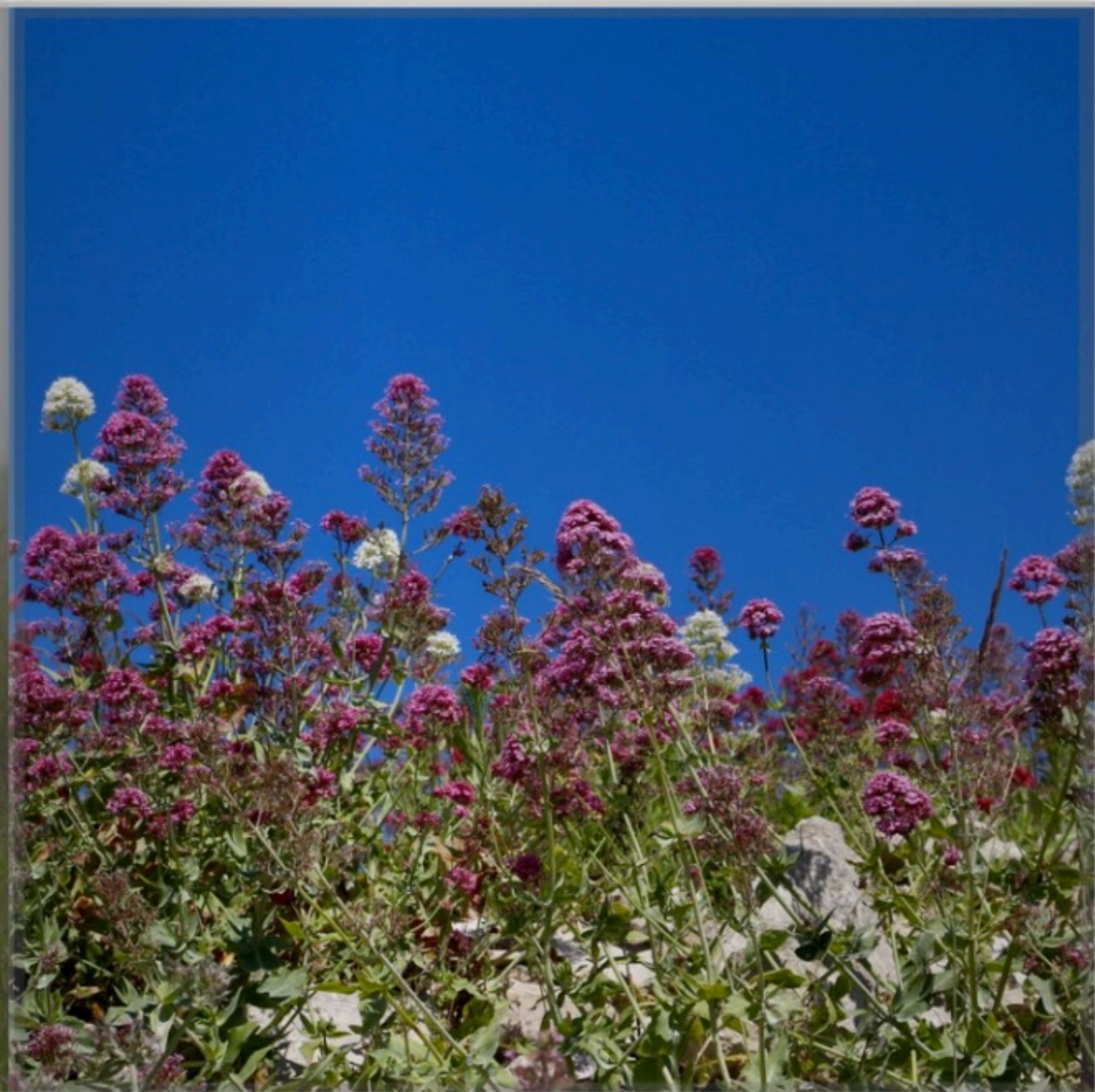


bramble



Blowballs waiting for a gust of wind or a child.

next pages: Beauty in any weather!

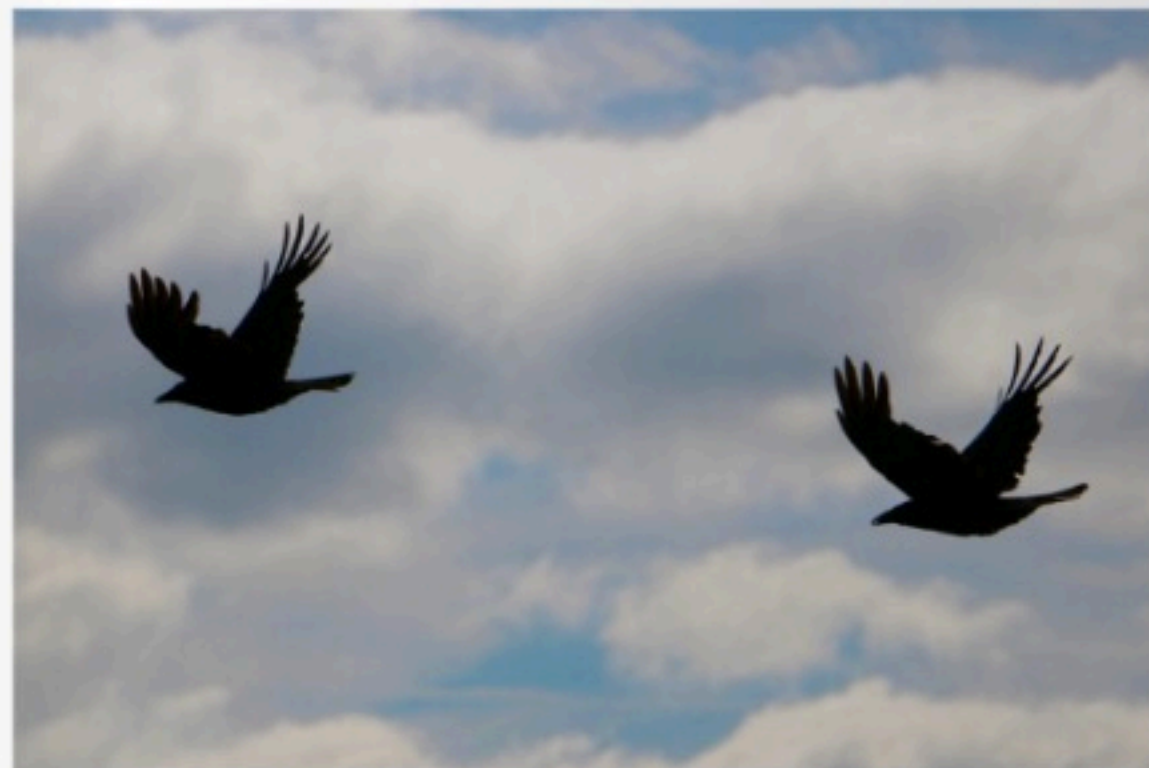




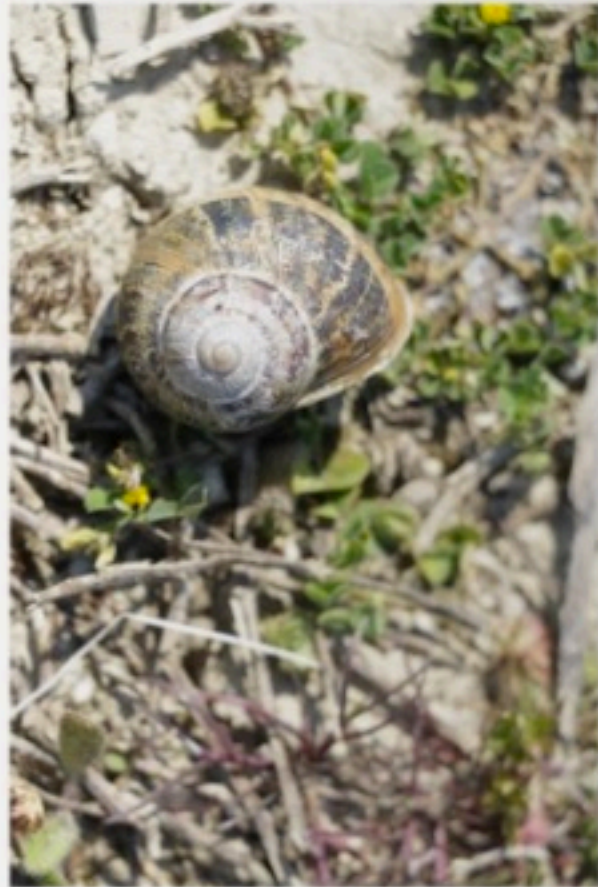
top: Herring Gul
bottom: crows

< female blackbird

next pages:
left: Fly taking a short
rest on Portland stone.
right: Woodlouse forging
ahead through the
dense grass.

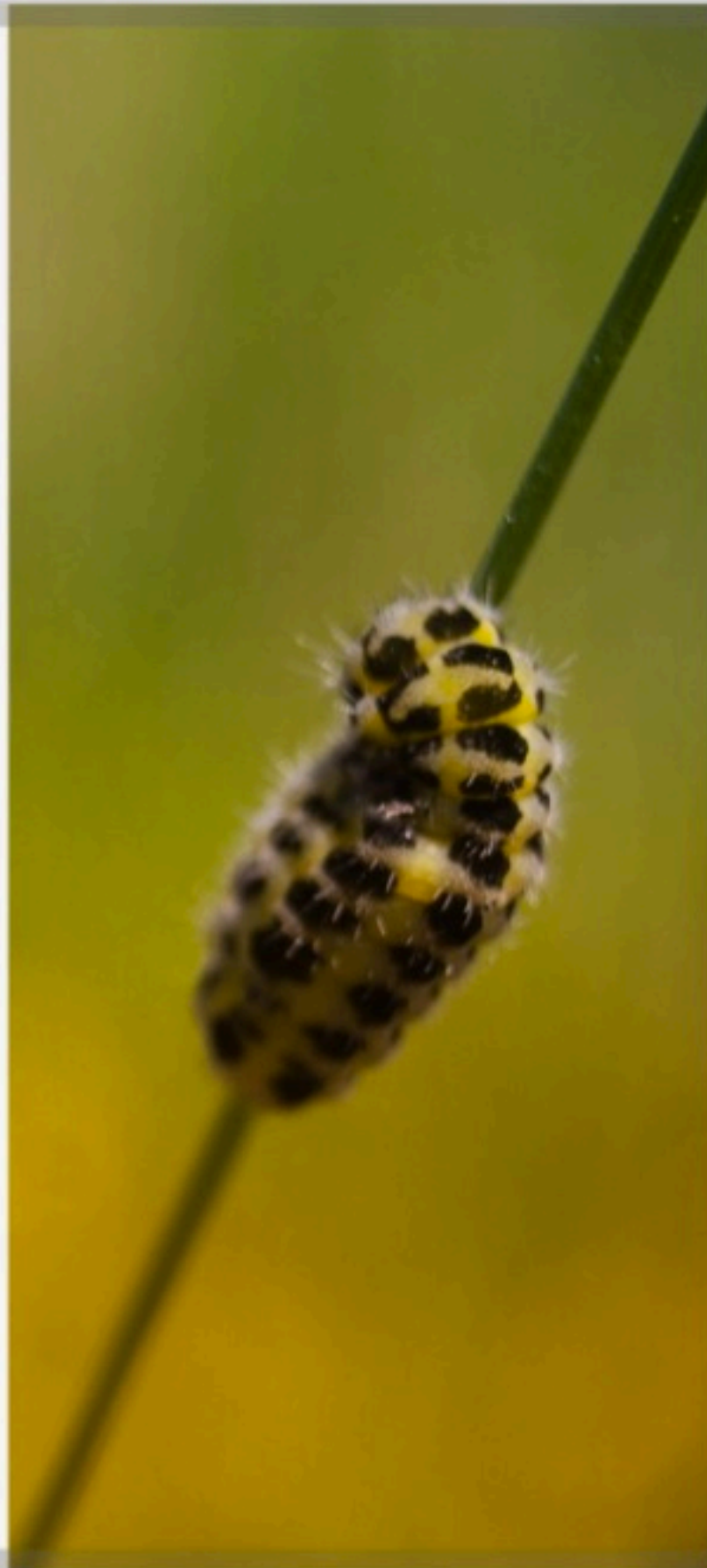
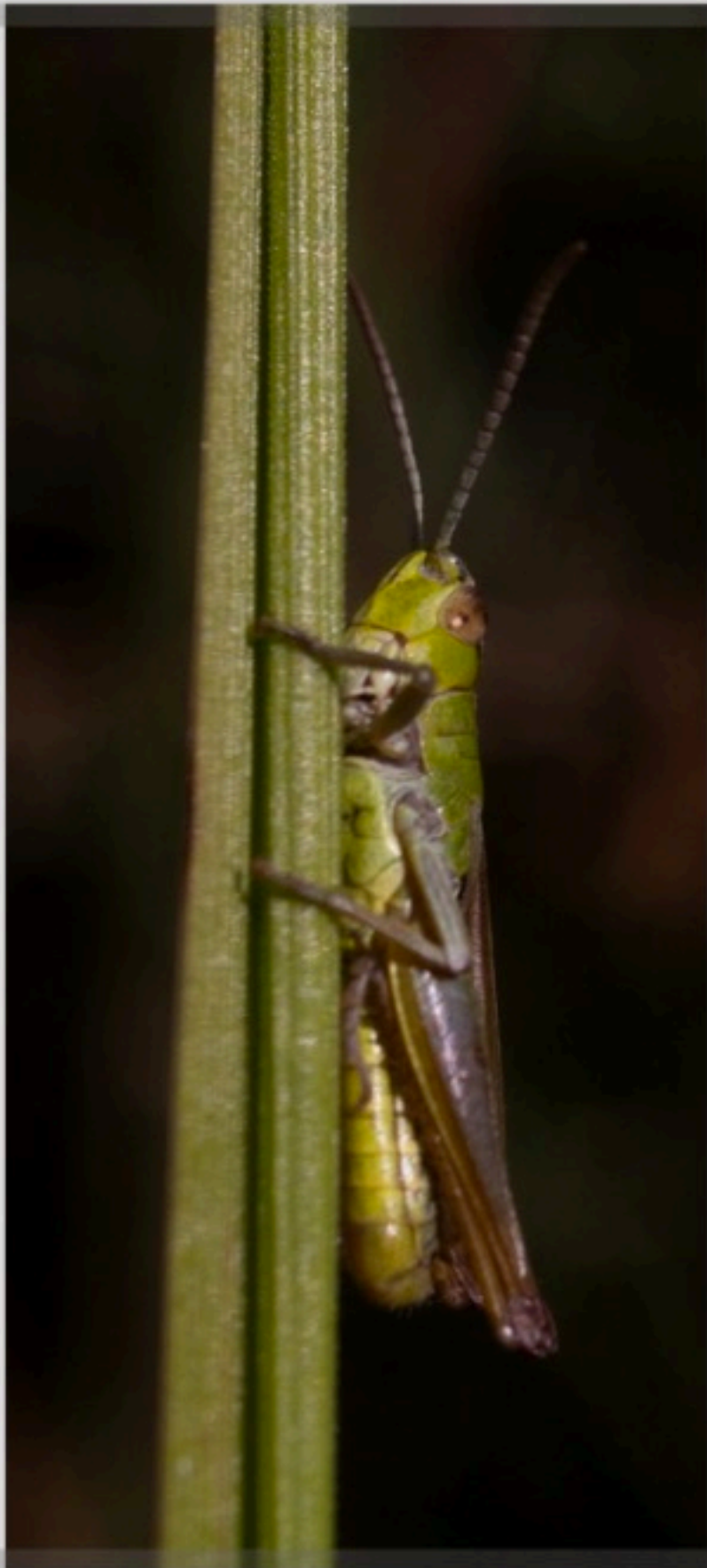






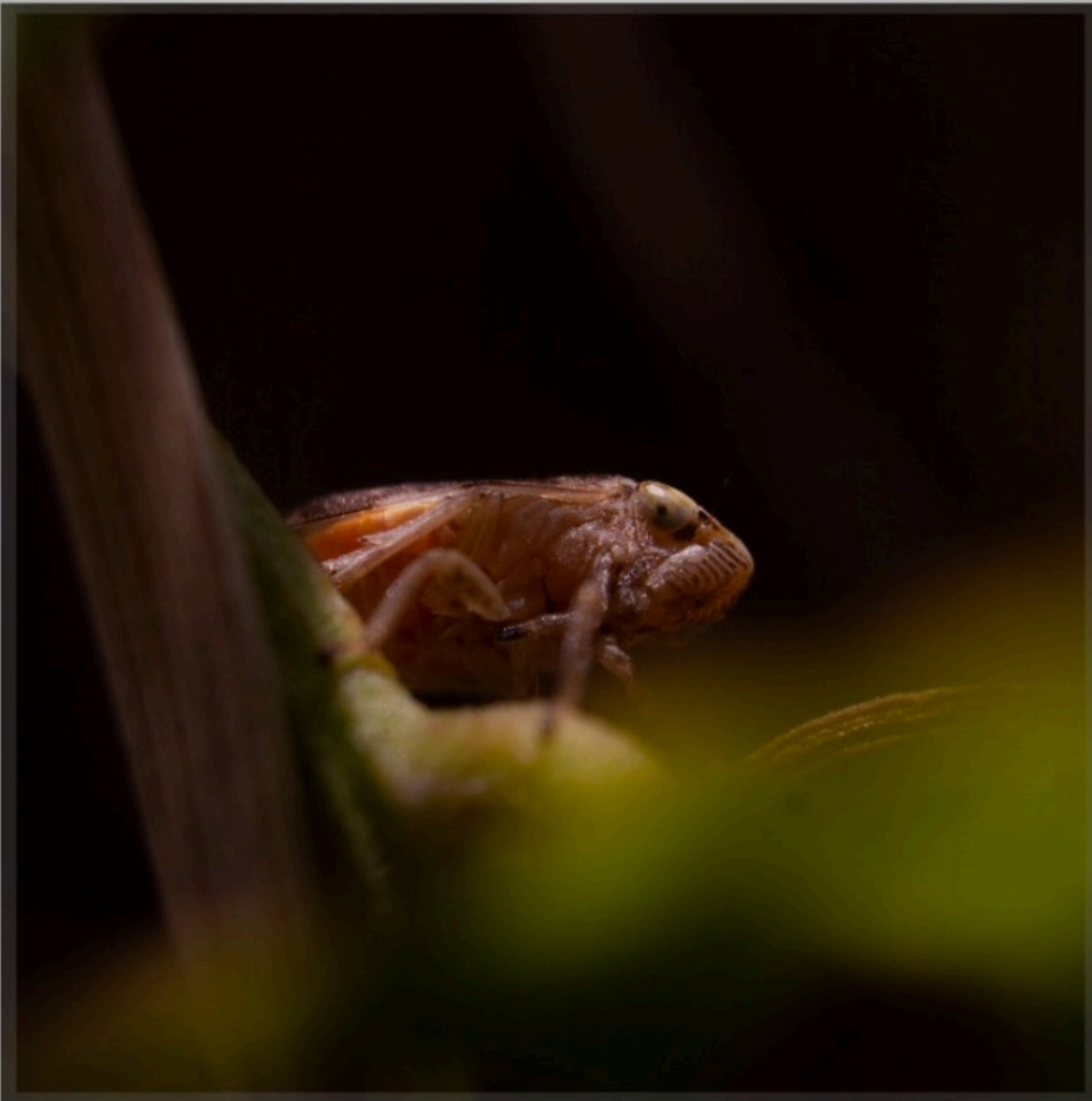
< top left: Grove Snail | top right: trail of a snail
bottom left: Grove Snail | bottom right: empty snail shell

Black Slug



< left: Meadow Grasshopper | right: Six Spot Burnet Caterpillar

Green Weevil



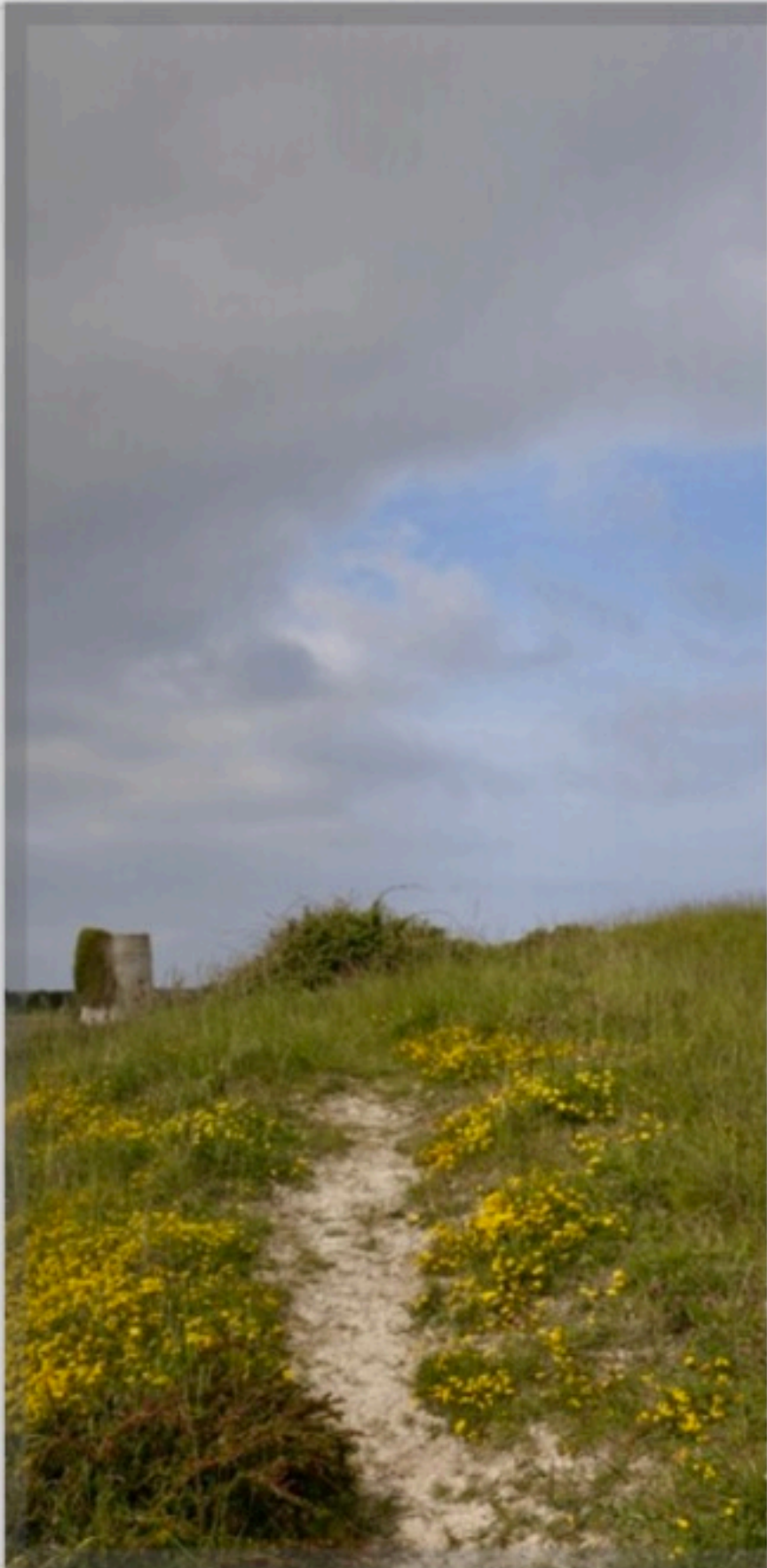


previous pages:
left: Leafhopper
right: Cinnabar Moth

top: Something hiding?
bottom: small spider

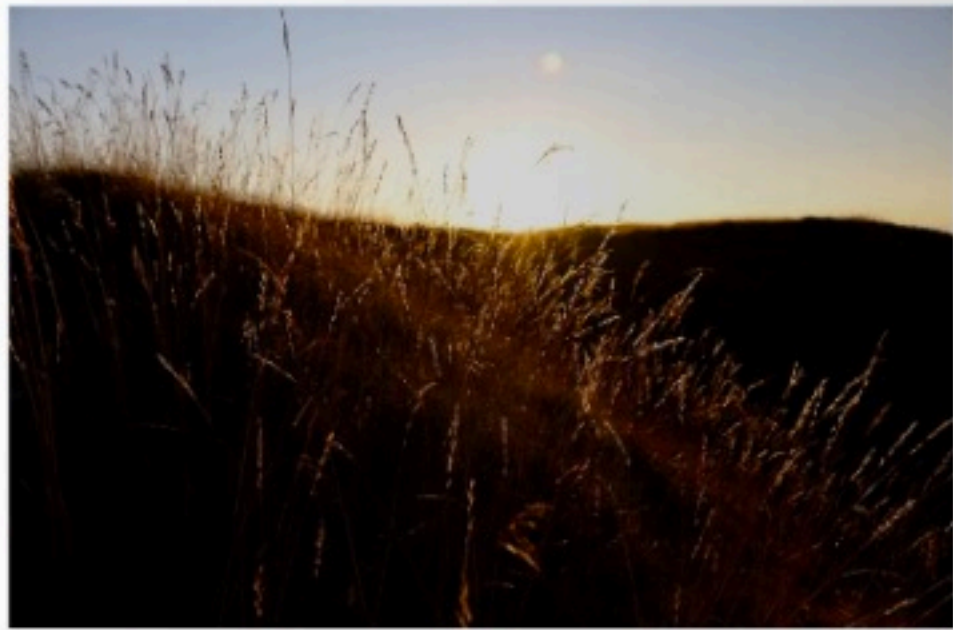


Flowers and their guests:
top: wild bee
mid: Kidney Vetch
bottom: Thick Legged Flower Beetles

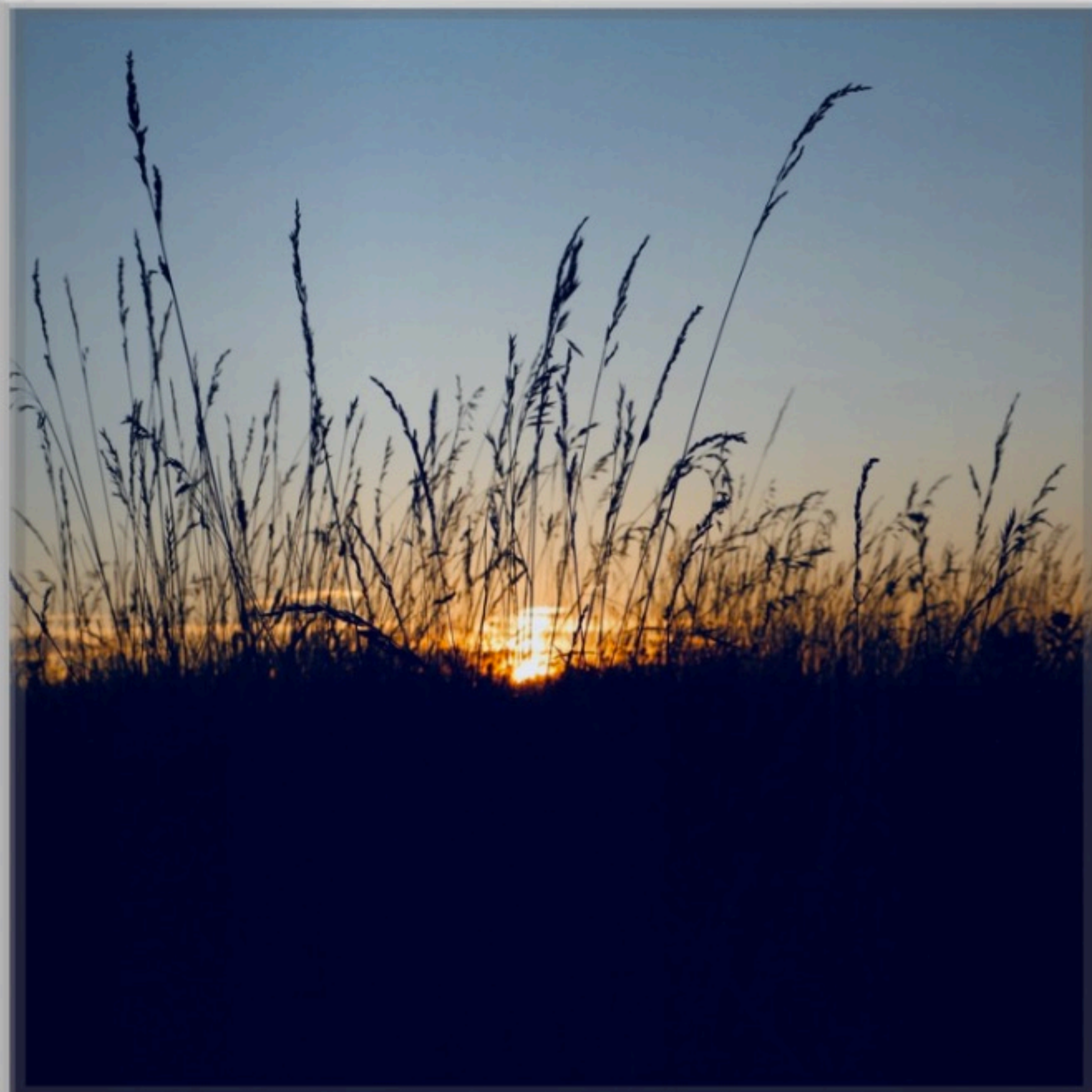


< Footpaths inviting visitors to explore the national park.

Evening mood on the range.



Unforgettable sunsets over Easton Ridge National Park.



Acknowledgements

This limited edition artist book was edited by Claudia Antonius and Jörg Jozwiak (*Institute of Inter-witted Research*), Vienna, 2018. The book is a component of the art project *Easton Ridge National Park* that was commissioned by the *b-side multimedia arts festival* on the Isle of Portland (UK); September 8th to 16th 2018. It would not have been possible without the kind support of Portland-based photographers Dave Warren and Georgina Rose.

Illustrations:

Dave Warren: Cover (front and back), 6/7, 10, 11, 12, 13, 14, 15, 16 (top left, bottom right), 17 (top left and right, bottom left), 18 (top), 19, 20, 21, 22, 23, 24, 25, 26, 27, 29, 30, 31, 32, 33, 34, 35, 36, 37, 38, 40, 41, 45, 46 (top), 47, 48, 49, 50, 51

Georgina Rose: 16 (top right, bottom left), 17 (bottom right), 18 (bottom), 28, 39, 42 (left and right), 43, 44, 46 (bottom)

Jörg Jozwiak: 4, 8, 9

Special thanks also go to:

Amanda Wallwork (b-side Co curator and Artistic Programme Coordinator) for overall support of this project.

Jess Tilley (Dorset Wildlife Trust) for identifying individual species and providing captions.

Stone Firms Ltd for supporting us using this land for the project.

